



Professional HEAVY DUTY
GLA 18VH-7500

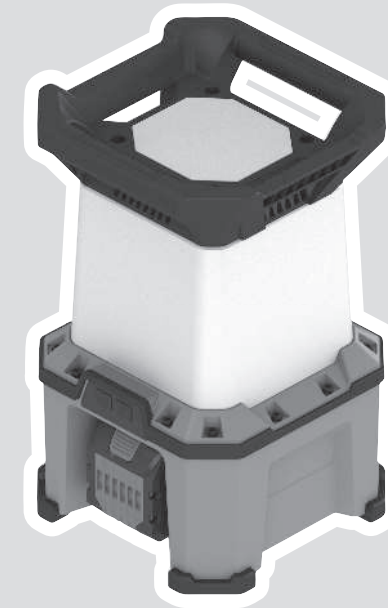
Robert Bosch Power Tools GmbH
70538 Stuttgart
GERMANY

www.bosch-pt.com

1 609 92A 9RE (2026.01) TAG / 11



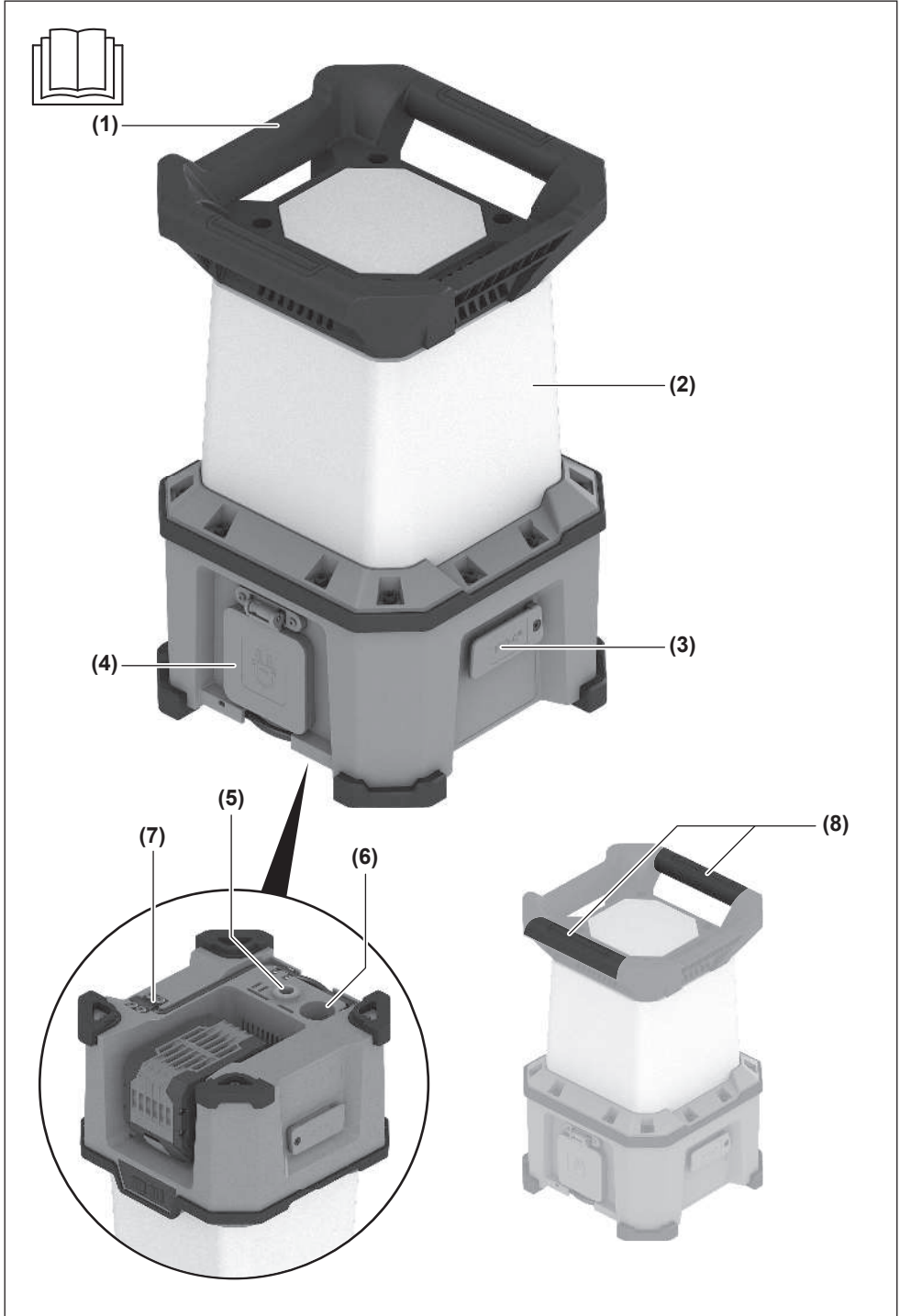
1 609 92A 9RE



zh 原始使用說明書



繁體中文..... 頁 5





繁體中文

安全注意事項

照明燈的安全注意事項



請詳讀所有安全注意事項和指示。如未遵守安全注意事項與指示，可能導致火災、人員遭受電擊及 / 或重傷。

請妥善保存所有安全注意事項與指示，以供日後查閱之用。

- ▶ 請詳讀並遵循充電電池或隨附充電電池之電動工具的所有安全注意事項和指示。
- ▶ 請您謹慎對待照明燈。照明燈所散發出來的熱度極高，進一步提高了著火及爆炸的危險性。
- ▶ 請勿在具有爆炸危險的環境中使用照明燈。
- ▶ 照明燈自動關機後，請勿再按壓電源開關。否則充電電池可能會損壞。充電式照明燈重新開機之前，請確認充電電池已充好電而且照明燈已冷卻。
- ▶ 照明燈中內含的發光源部件僅可交由原廠或合格的專業技師進行更換。



請讓照明燈與所有欲打光之表面和物件相隔一段適當距離。如果太過靠近，可能導致該物件過熱。

- ▶ 使用照明燈的期間，不得有任何物品遮住燈頭。開燈後燈頭會變熱，如果熱氣被堵塞了可能會起火燃燒。
- ▶ 在搬運和存放過程中，請取下照明燈上的充電電池或拔起電源插頭。照明燈可能會發熱。
- ▶ 在潮濕環境中使用照明燈時，請使用漏電斷路器。安裝漏電斷路器可避免觸電風險。
- ▶ 在高處使用照明燈時，應使用防墜設備充分固定這樣可以防止照明燈意外掉落造成財物損失和人身傷害。
- ▶ 請勿將充電式照明燈以電線連接或連接至其他不安全的物品上。有火災和受傷之虞。
- ▶ 如果照明燈使用掛鉤固定，請勿在其上放置任何額外重量並檢查是否牢固。掛鉤僅設計用於照明燈以及裝入的充電電池。若重量增加，照明燈可能會破裂或掉落。
- ▶ 如果充電式照明燈使用磁鐵或掛鉤加以固定，請勿移動充電式照明燈或與之相連的物品。充電式照明燈可能會掉落。
- ▶ 請勿將照明燈當做座椅或登高踏墊使用。您可能會損壞照明燈。
- ▶ 避免讓工作場所堆積過多的塵垢。塵埃容易被點燃。
- ▶ 如果充電電池損壞了，或者未按照規定使用充電電池，充電電池中會散發出有毒蒸氣。充電電池可能起火或爆炸。工作場所必須保持空氣流通，如果身體有任何不適必須馬上就醫。充電電池散發的蒸氣會刺激呼吸道。
- ▶ 不當使用或充電電池受損時，充電電池可能會流出可燃液體。請避免接觸。意外沾到時，請用水

徹底沖洗。如果液體跑進眼睛裡，請進一步就醫。從電池中滲出的液體可能造成腐蝕或起火。

- ▶ 尖銳物品（例如釘子或螺絲起子）或是外力皆有可能造成充電電池損壞。進而導致內部短路而發生電池起火、冒煙、爆炸或過熱等事故。
- ▶ 充電電池不使用時，請讓它遠離迴紋針、硬幣、鑰匙、釘子、螺釘或其他小金屬物體，以免造成兩極相接。電池端點短路會引起燃燒或火災。
- ▶ 切勿拆開充電電池。可能造成短路。



保護充電電池免受高溫（例如長期日照）、火焰、污垢、水液和濕氣的侵害。有爆炸及短路之虞。



- ▶ 僅能使用製造商規定的充電器進行充電。將適用於某特定電池盒的充電器用於其他電池盒時，可能會造成起火燃燒。
- ▶ 僅可在製造商的產品中使用充電電池。如此才可提供過載保護。

產品和規格

請留意操作說明書中最前面的圖示。

依規定使用機器

此照明燈的設計是可同時用於室內區域，可在一定時間內機動照明固定範圍的空間，它並不適用於居家照明。

插圖上的機件

機件的編號和照明燈詳解圖上的編號一致。

- (1) 提把
- (2) 燈頭
- (3) USB Type-C® 接孔
- (4) 電源連接
- (5) 5/8" 三腳架固定座
- (6) 三腳架固定座 GLT 300-40
- (7) 掛鉤
- (8) 防墜設備的固定區域
- (9) 充電電池^{a)}
- (10) 電池固定座
- (11) 充電電池解鎖按鈕^{a)}
- (12) 起停開關
- (13) 照明區域按鈕

a) 所述之配件並不包含在基本的供貨範圍中。

技術性數據

照明燈	GLA 18VH-7500	
產品機號	3 601 DA5 0..	
通電模式時的最大額定輸入功率	W	100
電池模式時的最大額定輸入功率	W	100

照明燈		GLA 18VH-7500
顯色指數		> 80
USB 連接埠類型		USB Type-C ^{A)}
- 輸出電壓	V=	5.0-9.0
- 輸出電流	A	1.67-3.0
總光通量 ^{B)}		
- 第 1 段	lm	2500
- 第 2 段	lm	5000
- 第 3 段	lm	7500
防護等級		□/II
電池模式		
全亮持續時間, 約略值 B)C)	min/Ah	12
充電狀態下的建議環境溫度	°C	0 ... +35
操作狀態下的容許環境溫度 ^{D)} 以及存放狀態下	°C	-20 ... +40
相容的充電電池		GBA18V... GBA 18V... ProCORE18V... EXPERT18V... EXBA18V... CORE18V...
建議使用的充電器		GAL18... GAL 18... GAL 36... GAL12V/18... GAL 12V/18... GAX 18... EXAL18...

A) USB Type-C® 和 USB-C® 商標為 USB Implementers Forum 所有。

B) 於 20-25 °C 配備充電電池 **ProCORE18V 4.0Ah** 時測得。

C) 全程使用最大亮度, 包含最後轉為弱光的尾聲階段

D) 溫度 <0 °C 時, 性能受限

數值可能因產品而異, 並受使用條件以及環境條件影響。進一步資訊請見 www.bosch-professional.com/wac。

物體受到本產品燈光照射後所呈現的顏色可能會有色差。

本產品的光源能源效率等級為 E。

電源供應

燈具的電源可以透過 **Bosch** 18V 鋰離子充電電池 (9) 或透過電源插座上的冷插頭供電 (4)。

通電運轉

▶ 切勿使用電線已經損壞的燈具。請使用合適的冷插頭電纜更換損壞的電源線。**Bosch** 可為您提供合適的電線。

▶ 燈具的電源透過電源供應, 只要連接冷插頭電纜, 無論是否裝入電池, 均可供電。

打開電源接頭 (4) 的蓋子。將冷插頭插入電源插座 (4)。將冷插頭電纜連接到電源。燈具現在可以使用了。

移除冷插頭電纜時, 請關上電源連接的蓋子 (4) 以防止污垢進入。

充電電池

Bosch 銷售不含充電電池的照明燈。可以從外包裝看出照明燈的供貨範圍是否包括電池。

為充電電池進行充電

▶ 只能選用技術性數據裡所列出的充電器。僅有這些充電器適用於該照明燈所使用的鋰離子充電電池。

提示: 由於國際運輸規定, 出貨時鋰離子充電電池已部分充電。初次使用電動工具之前, 請先將充電電池充飽電以確保充電電池蓄滿電力。

安裝充電電池

將已充飽電的充電電池推至充電電池固定座內, 直到卡緊。



取出充電電池

若要取出充電電池, 請按解鎖鈕, 然後將充電電池抽出。不可以強行拉出充電電池。

本充電電池具備了雙重鎖定功能, 即使不小心按壓了充電電池解鎖按鈕, 充電電池也不會從機器中掉落出來。固定彈簧會把充電電池夾緊在機器中。

充電電池的電量指示器

提示: 並非所有的充電電池類型都有電量指示器。充電電池的電量指示器透過綠色 LED 燈告知充電電池的目前電量。基於安全顧慮, 務必在電動工具完全靜止時才能檢查充電電池的電量。

按一下電量指示器按鈕  或 , 即可顯示目前的電量。即使已取出充電電池, 此項功能仍可正常運作。

按壓電量顯示按鈕後, LED 燈若未亮起, 即表示充電電池故障, 必須予以更換。

充電電池型號 GBA 18V... | GBA18V...



LED	容量
3 顆綠燈持續亮起	60-100 %
2 顆綠燈持續亮起	30-60 %
1 顆綠燈持續亮起	5-30 %
1 顆綠燈呈閃爍狀態	0-5 %

充電電池型號 ProCORE18V... | EXPERT18V... | EXBA18V... | CORE18V...



LED	容量
5 顆綠燈持續亮起	80-100 %
4 顆綠燈持續亮起	60-80 %

LED	容量
3 顆綠燈持續亮起	40–60 %
2 顆綠燈持續亮起	20–40 %
1 顆綠燈持續亮起	5–20 %
1 顆綠燈呈閃爍狀態	0–5 %


電池電量指示器（照明燈）


在電池模式下開燈時，電池電量指示器的五顆 LED 會顯示電池的充電狀態。通電模式時，不會顯示電池充電狀態。


電池缺陷風險檢測

EXPERT18V... | EXBA18V...

電池電量指示器的 LED 燈除了顯示電池的充電狀態外，還可顯示電池缺陷的風險。

要啟用此功能，請按住電量指示器按鈕  3 秒鐘。電池電量指示器上的跑動燈號會顯示電池的分析結果。結果會顯示在電池電量指示器上。

 **1 個 LED 燈：**電池有很高的缺陷風險。效能和運作時間可能已經降低。建議更換電池。

 **5 個 LED 燈：**充電電池狀況良好，故障風險低。

請注意：電池缺陷風險評估分為兩個階段，並提供簡化的狀況評估。電池會被評估為狀況良好或缺陷風險增加。不會顯示電池狀況的百分比。

如何正確地使用充電電池

妥善保護充電電池，避免濕氣和水分滲入。

充電電池必須儲存在 -20 °C 至 50 °C 的環境中。

夏天不可以把充電電池擱置在汽車中。

偶爾用柔軟、乾淨且乾燥的毛刷清潔充電電池的通氣孔。

充電後如果充電電池的使用時間明顯縮短，代表充電電池已經損壞，必須更換新的充電電池。

請您遵照廢棄物處理相關指示。

操作

架設方式

請將照明燈放置在穩固的平坦表面上。請注意，支點必須穩固。

開關方式與亮度設定

起停開關	功能
按 1 次	啟動照明燈，低亮度
按 2 次	啟動照明燈，中亮度
按 3 次	啟動照明燈，全亮度
按 4 次	關閉照明燈

當照明燈啟動約 5 分鐘後，再按一下即可將它關閉。

設定照明區域

使用照明區域按鈕 **(13)** 將照明區域設定為 360° 或 180°。

溫控的過載保護裝置

當操作溫度已超出允許範圍時，會先調降亮度，必要時才會關閉電源以保護照明燈。請讓照明燈冷卻後再重新開啟照明燈。

為外接式 USB 裝置充電

您可利用 USB 連接埠，為使用各種不同規格充電電池的 USB 裝置（例如行動電話、MP3 播放器或平板電腦），延長其充電電池的運作時間。

► **請確定您的外接式 USB 裝置可以使用 USB 連接埠充電。請注意「技術性數據」中的數據。**

- 請將 USB 裝置的充電導線插入 USB 插孔 **(3)**。
- 按下啟動鈕啟用。

為了節省能源，USB 連接埠會在充電完成或充電線中斷 2 小時後自動停用。

作業注意事項

照明燈會在因充電電池的電力耗盡而即將熄滅前，先閃爍 3 次並將其燈光改為較低亮度。

掛鈎

您可以使用掛鈎 **(7)** 懸掛照明燈。

► **請勿使用掛鈎將物件拉向您的方向。**掛鈎或照明燈可能會破裂。

固定於三腳架上 (BT 160/BT 170 HD/BT 300 HD)

此照明燈設有三腳架固定座 **(5)**，透過它即可將此燈鎖在三腳架上。

請將照明燈牢牢固定在三腳架上。請確認照明燈不會鬆脫或掉落。

請注意，三腳架必須穩固站立。

固定於三腳架上 (GLT 300-40)

此照明燈設有快速三腳架固定座 **(6)**，透過它即可將此燈安裝在三腳架上。

請將照明燈放置在三腳架上。

請注意，三腳架必須穩固站立。

固定防墜設備

提示：為防止照明燈掉落，應使用適用於系統重量的防墜設備。防墜設備的最大允許長度為 0.5 m。

最好使用附有錨定縫線的織帶吊索固定在把手上，或使用附有減震器防墜設備作為防墜設備。

固定防墜設備時，務必遵守其操作說明書。

► **選擇錨定點，以便電動工具在墜落時可以自由落入防墜裝置，而不會危及使用者。請務必將防墜設備的另一側固定到穩固的結構（例如建築物或鷹架）上。**

自由墜落保護裝置必須能活動自如，並且只能 **(8)** 連接到照明燈上允許的固定區域。

維修和服務

維修和清潔

- ▶ 對照明燈進行任何作業（例如安裝、保養等等）以及搬運、收納充電式照明燈之前，必須先將充電電池從照明燈中取出。若是不小心觸動起停開關，可能造成人員受傷。

本照明燈無須保養，且沒有必須更換或保養的零件。

為避免刮損塑膠板，僅可使用柔軟乾布清潔照明燈上的塑膠板。切勿使用清潔劑或溶液。

顧客服務處和顧客諮詢中心

台灣進口商

電話: (02) 7734 2588

製造商地址:

Robert Bosch Power Tools GmbH

羅伯特·博世電動工具有限公司

70538 Stuttgart / GERMANY

70538 斯圖加特 / 德國

當您需要諮詢或訂購備用零件時，請務必提供本產品型號銘牌上 10 位數的產品機號。

廢棄物處理

照明燈、電池、所有配件及包裝均應以符合環保之方式回收利用。



請勿將照明燈及充電電池 / 拋棄式電池作為一般垃圾丟棄!

限用物質及其化學符號

單元	鉛 (Pb)	汞 (Hg)	鎘 (Cd)	六價鉻 (Cr ⁺⁶)	多溴聯苯 (PBB)	多溴二苯醚 (PBDE)
電源開關	○	○	○	○	○	○
外殼金屬部件	○	○	○	○	○	○
外殼非金屬部件	○	○	○	○	○	○
印刷電路板	○	○	○	○	○	○
連接件	○	○	○	○	○	○
電源線	超出 0.1 wt %	○	○	○	○	○
電池系統	超出 0.1 wt %	○	○	○	○	○

備考 1. "超出 0.1 wt %" 及 "超出 0.01 wt %" 係指限用物質之百分比含量超出百分比含量基準值。

備考 2. "○" 係指該項限用物質之百分比含量未超出百分比含量基準值。

備考 3. "-" 係指該項限用物質為排除項目。

Legal Information and Licenses

Apache 2.0

CMSIS_5, v5.9.0

Copyright 2009-2020 Arm Limited. All rights reserved.

Licensed under the Apache License, Version 2.0 (the "License"); you may not use this file except in compliance with the License.

You may obtain a copy of the License at

<http://www.apache.org/licenses/LICENSE-2.0>

Unless required by applicable law or agreed to in writing, software distributed under the License is distributed on an "AS IS" BASIS, WITHOUT WARRANTIES OR CONDITIONS OF ANY KIND, either express or implied. See the License for the specific language governing permissions and limitations under the License.

Apache 2.0 License

Version 2.0, January 2004

<http://www.apache.org/licenses/>

TERMS AND CONDITIONS FOR USE, REPRODUCTION, AND DISTRIBUTION

1. Definitions.

"License" shall mean the terms and conditions for use, reproduction, and distribution as defined by Sections 1 through 9 of this document.

"Licensor" shall mean the copyright owner or entity authorized by the copyright owner that is granting the License.

"Legal Entity" shall mean the union of the acting entity and all other entities that control, are controlled by, or are under common control with that entity. For the purposes of this definition, **"control"** means (i) the power, direct or indirect, to cause the direction or management of such entity, whether by contract or otherwise, or (ii) ownership of fifty percent (50%) or more of the outstanding shares, or (iii) beneficial ownership of such entity.

"You" (or **"Your"**) shall mean an individual or Legal Entity exercising permissions granted by this License.

"Source" form shall mean the preferred form for making modifications, including but not limited to software source code, documentation source, and configuration files.

"Object" form shall mean any form resulting from mechanical transformation or translation of a Source form, including but not limited to compiled object code, generated documentation, and conversions to other media types.

"Work" shall mean the work of authorship, whether in Source or Object form, made available under the License, as indicated by a copyright notice that is included in or attached to the work (an example is provided in the Appendix below).

"Derivative Works" shall mean any work, whether in Source or Object form, that is based on (or derived from) the Work and for which the editorial revisions, annotations, elaborations, or other modifications represent, as a whole, an original work of authorship. For the purposes of this License, Derivative Works shall not include works that remain separable from, or merely link (or bind by name) to the interfaces of, the Work and Derivative Works thereof.

"Contributor" shall mean any work of authorship, including the original version of the Work and any modifications or additions to that Work or Derivative Works thereof, that is intentionally submitted to Licensor for inclusion in the Work by the copyright owner or by an individual or Legal Entity authorized to submit on behalf of the copyright owner. For the purposes of this definition, **"submitted"** means any form of electronic, verbal, or written communication sent to the Licensor or its representatives, including but not limited to communication on electronic mailing lists, source code control systems, and issue tracking systems that are managed by, or on behalf of, the Licensor for the purpose of discussing and improving the Work, but excluding communication that is conspicuously marked or otherwise designated in writing by the copyright owner as **"Not a Contribution."**

"Contributor" shall mean Licensor and any individual or Legal Entity on behalf of whom a Contribution has been received by Licensor and subsequently incorporated within the Work.

2. Grant of Copyright License. Subject to the terms and conditions of this License, each Contributor hereby grants to You a perpetual, worldwide, non-exclusive, no-charge, royalty-free, irrevocable copyright license to reproduce, prepare Derivative Works of, publicly display, publicly perform, sublicense, and distribute the Work and such Derivative Works in Source or Object form.

3. Grant of Patent License. Subject to the terms and conditions of this License, each Contributor hereby grants to You a perpetual, worldwide, non-exclusive, no-charge, royalty-free, irrevocable (except as stated in this section) patent license to make, have made, use, offer to sell, sell, import, and otherwise transfer the Work, where such license applies only to those patent claims licensable by such Contributor that are necessarily infringed by their Contribution(s) alone or by combination of their Contribution(s) with the Work to which such Contribution(s) was submitted. If You institute patent litigation against any entity (including a cross-claim or counterclaim in a lawsuit) alleging that the Work or a Contribution incorporated within the Work constitutes direct or contributory patent infringement, then any patent licenses granted to You under this License for that Work shall terminate as of the date such litigation is filed.

4. Redistribution. You may reproduce and distribute copies of the Work or Derivative Works thereof in any medium, with or without modifications, and in Source or Object form, provided that You meet the following conditions:

- You must give any other recipients of the Work or Derivative Works a copy of this License; and
- You must cause any modified files to carry prominent notices stating that You changed the files; and
- You must retain, in the Source form of any Derivative Works that You distribute, all copyright, patent, trademark, and attribution notices from the Source form of the Work, excluding those notices that do not pertain to any part of the Derivative Works; and
- If the Work includes a **"NOTICE"** text file as part of its distribution, then any Derivative Works that You distribute must include a readable copy of the attribution notices contained within such NOTICE file, excluding those notices that do not pertain to any part of the Derivative Works, in at least one of the following places: within a NOTICE text file distributed as part of the Derivative Works; within the Source form or documentation, if provided along with the Derivative Works; or, within a display generated by the Derivative Works, if and wherever such third-party notices normally appear. The contents of the NOTICE file are for informational purposes only and do not modify the License. You may add Your own attribution notices within Derivative Works that You distribute, alongside or as an addendum to the NOTICE text from the Work, provided that such additional attribution notices cannot be construed as modifying the License. You may add Your own copyright statement to Your modifications and may provide additional or different license terms and conditions for use, reproduction, or distribution of Your modifications, or for any such Derivative Works as a whole, provided Your use, reproduction, and distribution of the Work otherwise complies with the conditions stated in this License.

5. Submission of Contributions. Unless You explicitly state otherwise, any Contribution intentionally submitted for inclusion in the Work by You to the Licensor shall be under the terms and conditions of this License, without any additional terms or conditions. Notwithstanding the above, nothing herein shall supersede or modify the terms of any separate license agreement you may have executed with Licensor regarding such Contributions.

6. Trademarks. This License does not grant permission to use the trade names, trademarks, service marks, or product names of the Licensor,

except as required for reasonable and customary use in describing the origin of the Work and reproducing the content of the NOTICE file.

7. Disclaimer of Warranty. Unless required by applicable law or agreed to in writing, Licensor provides the Work (and each Contributor provides its Contributions) on an "AS IS" BASIS, WITHOUT WARRANTIES OR CONDITIONS OF ANY KIND, either express or implied, including, without limitation, any warranties or conditions of TITLE, NON-INFRINGEMENT, MERCHANTABILITY, or FITNESS FOR A PARTICULAR PURPOSE. You are solely responsible for determining the appropriateness of using or redistributing the Work and assume any risks associated with Your exercise of permissions under this License.

8. Limitation of Liability. In no event and under no legal theory, whether in tort (including negligence), contract, or otherwise, unless required by applicable law (such as deliberate and grossly negligent acts) or agreed to in writing, shall any Contributor be liable to You for damages, including any direct, indirect, special, incidental, or consequential damages of any character arising as a result of this License or out of the use or inability to use the Work (including but not limited to damages for loss of goodwill, work stoppage, computer failure or malfunction, or any and all other commercial damages or losses), even if such Contributor has been advised of the possibility of such damages.

9. Accepting Warranty or Additional Liability. While redistributing the Work or Derivative Works thereof, You may choose to offer, and charge a fee for, acceptance of support, warranty, indemnity, or other liability obligations and/or rights consistent with this License. However, in accepting such obligations, You may act only on Your own behalf and on Your sole responsibility, not on behalf of any other Contributor, and only if You agree to indemnify, defend, and hold each Contributor harmless for any liability incurred by, or claims asserted against, such Contributor by reason of your accepting any such warranty or additional liability.

END OF TERMS AND CONDITIONS

startup_ARMCM0plus.s , V1.01

CMSIS Core Device Startup File for ARMCM0plus Device Series

Copyright (c) 2012 ARM LIMITED

All rights reserved.

Redistribution and use in source and binary forms, with or without modification, are permitted provided that the following conditions are met:

- Redistributions of source code must retain the above copyright notice, this list of conditions and the following disclaimer.
- Redistributions in binary form must reproduce the above copyright notice, this list of conditions and the following disclaimer in the documentation and/or other materials provided with the distribution.
- Neither the name of ARM nor the names of its contributors may be used to endorse or promote products derived from this software without specific prior written permission.

THIS SOFTWARE IS PROVIDED BY THE COPYRIGHT HOLDERS AND CONTRIBUTORS "AS IS" AND ANY EXPRESS OR IMPLIED WARRANTIES, INCLUDING, BUT NOT LIMITED TO, THE IMPLIED WARRANTIES OF MERCHANTABILITY AND FITNESS FOR A PARTICULAR PURPOSE ARE DISCLAIMED. IN NO EVENT SHALL COPYRIGHT HOLDERS AND CONTRIBUTORS BE LIABLE FOR ANY DIRECT, INDIRECT, INCIDENTAL, SPECIAL, EXEMPLARY, OR CONSEQUENTIAL DAMAGES (INCLUDING, BUT NOT LIMITED TO, PROCUREMENT OF SUBSTITUTE GOODS OR SERVICES; LOSS OF USE, DATA, OR PROFITS; OR BUSINESS INTERRUPTION) HOWEVER CAUSED AND ON ANY THEORY OF LIABILITY, WHETHER IN CONTRACT, STRICT LIABILITY, OR TORT (INCLUDING NEGLIGENCE OR OTHERWISE) ARISING IN ANY WAY OUT OF THE USE OF THIS SOFTWARE, EVEN IF ADVISED OF THE POSSIBILITY OF SUCH DAMAGE.

Warranty Disclaimer

This product contains Open Source Software components which underly Open Source Software Licenses. Please note that Open Source

Licenses contain disclaimer clauses. The text of the Open Source Licenses that apply are included in this manual under "Legal Information and Licenses".

Servicekontakte
Service Contacts
Contacts de Service
Contactos de Servicio



<https://www.bosch-pt.com/serviceaddresses>

Garantiebedingungen
Guarantee Conditions
Conditions de Garantie
Condiciones de Garantía



<https://www.bosch-pt.com/guarantee/202601>